

## Foam Chamber

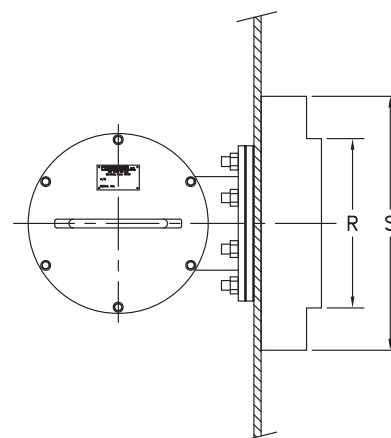
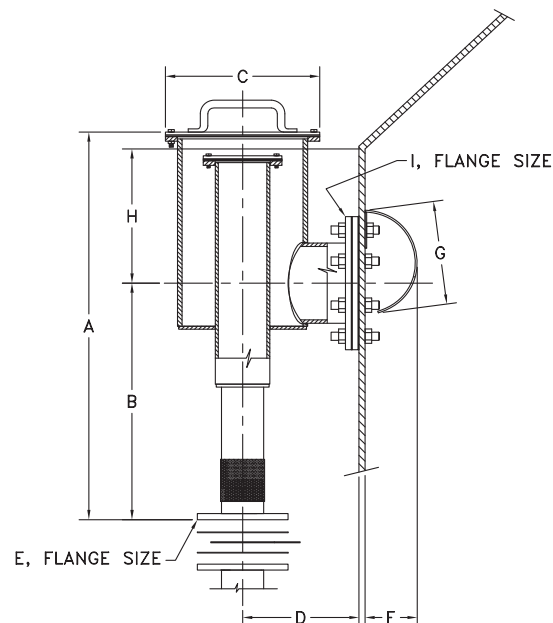
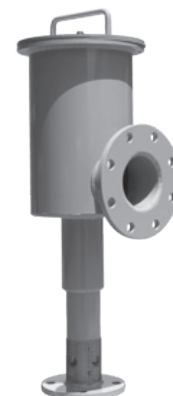
### Description

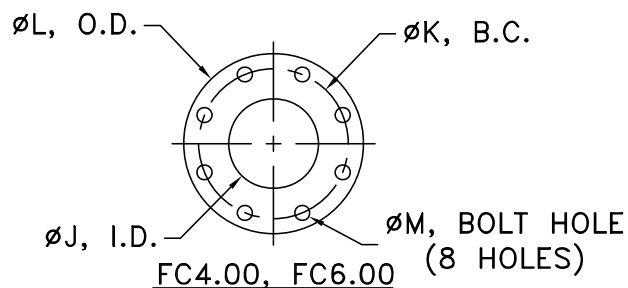
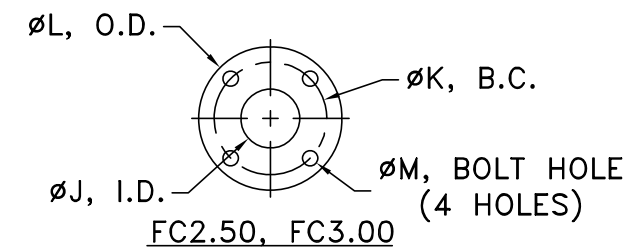
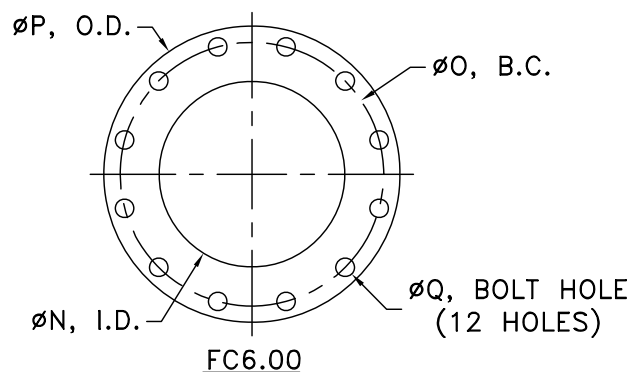
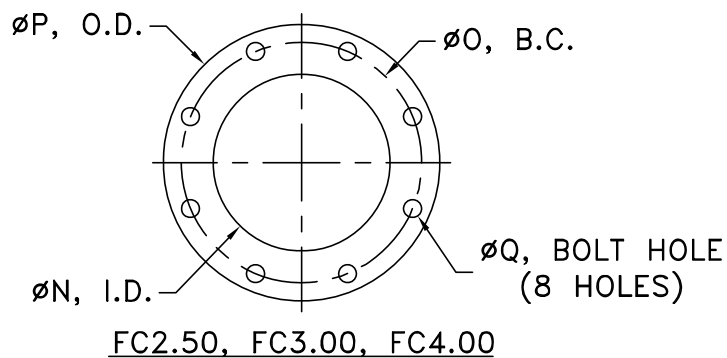
The Chemguard Foam Chamber consists of a foam expansion chamber and an integral foam maker. The foam chamber is installed on a flammable liquid storage tank just below the roof joint. The foam solution is piped to the chamber from outside the hazard area. Upon entering the chamber, the foam solution is expanded and then discharged against a deflector inside the storage tank. The deflector directs the foam against the inside wall of the storage tank. This reduces the submergence of the foam and agitation of the fuel surface.

(NFPA Type II Application)

### Features

- U. L. Listed
- (4) models available to cover all flow requirements
- Top of chamber has handle, which simplifies inspection access to the vapor seal
- Frangible glass vapor seal is provided. The glass is scored on one side and designed to break at a minimum 10 psi but not greater than 20 psi.
- Chamber manufactured in ASTM A36 carbon steel with a 304 stainless steel screen covering the foam maker air inlets.
- All foam chamber inlets and outlets are flat faced and drilled to ANSI 150 lb. standard. Flange gaskets are provided.
- Choice of two styles of deflector is available (split or solid)
- Finished with durable red epoxy paint
- A stainless steel inlet orifice is supplied. Chemguard sizes the orifice based on the foam solution flow requirements and the foam solution inlet pressure available at the base of the foam chamber.



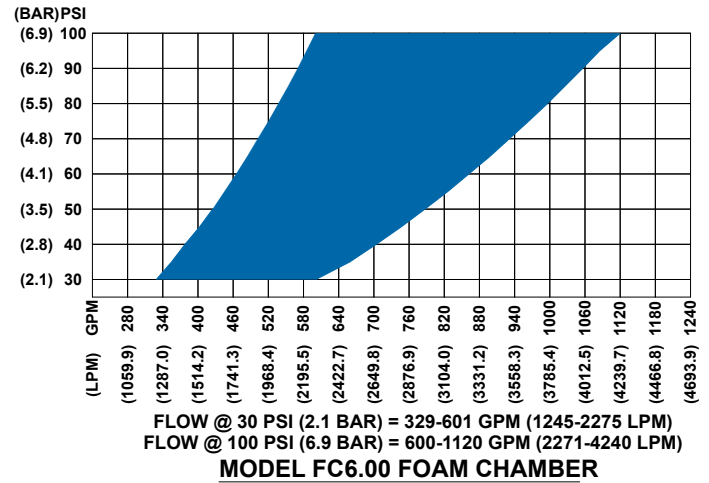
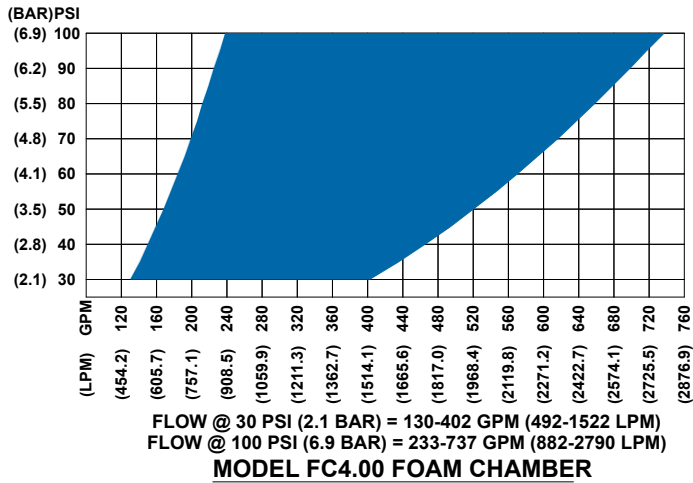
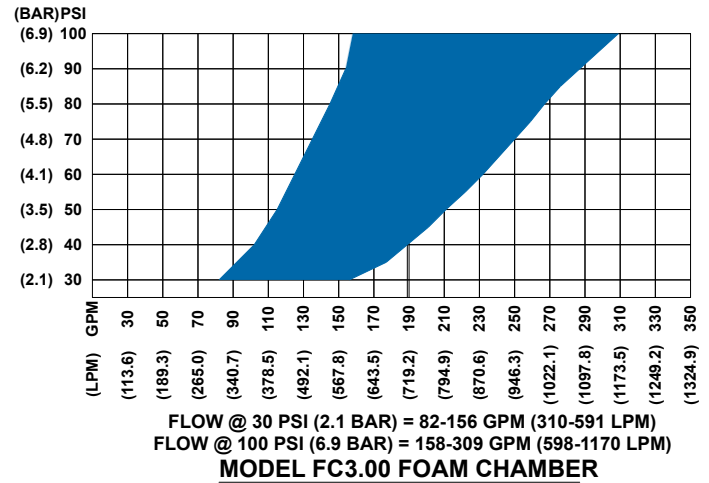
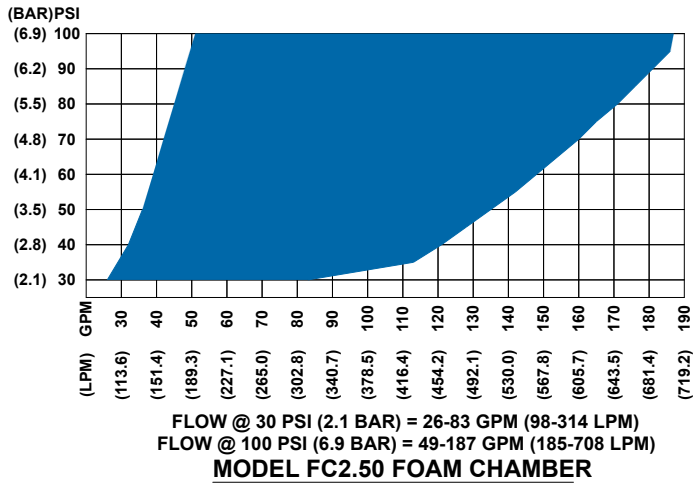
**INLET FLANGE E DETAIL**

**OUTLET FLANGE I DETAIL**

**CHAMBER DIMENSIONS**

ID	FC2.50	FC3.00	FC4.00	FC6.00
A	26-13/16	32-1/16	35-13/16	42-7/8
B	15-1/4	19-9/16	20-13/16	25-7/16
C	15-5/8	12-3/4	14-3/4	18
D	7	9	10	12
*E	2-1/2	3	4	6
F	3-1/4	4-1/4	5-3/8	6-3/8
G	6-1/2	8-1/2	10-1/2	12-1/2
H	8	9-1/2	11	12
*I	4	6	8	10
J	1	2	2-1/2	3-1/2
K	5-1/2	6	7-1/2	9-1/2
L	7	7-1/2	9	11
M	3/4	3/4	7/8	7/8
N	4-9/16	6-3/4	8-3/4	10-7/8
O	7-1/2	9-1/2	11-3/4	14-1/4
P	9	11	13-1/2	16
Q	3/4	7/8	7/8	1
R	8	12	16	20
S	12	18	24	30

\*Flange Size

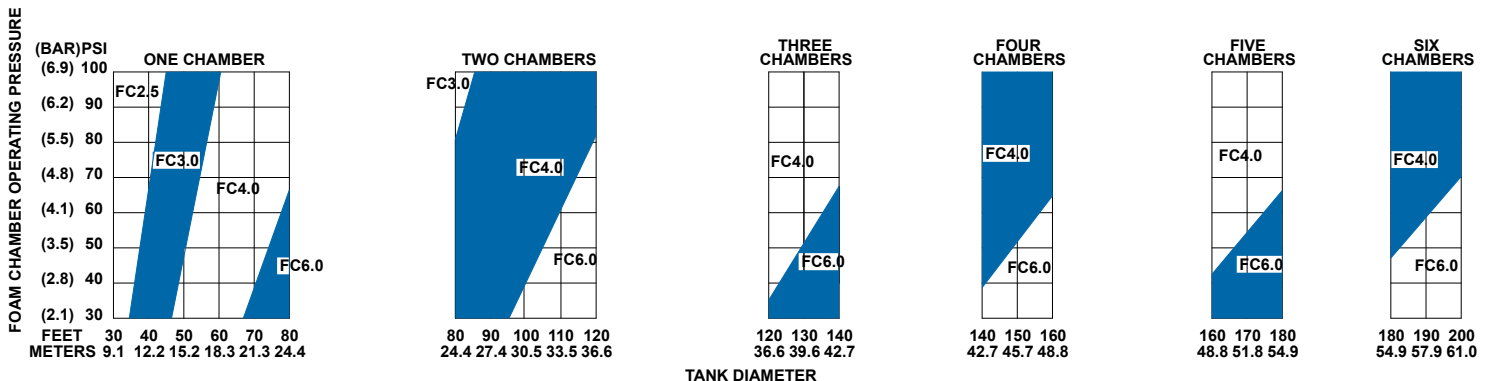
## Performance

### FLOW RANGE CHARTS



#### NOTE:

1. Solution flow can be specified for any flow/pressure combination within the shaded area.
2. Flows noted at 30 and 100 psi (2.1 & 6.9 bar) are flow achieved through the smallest & largest orifice available for each device.



#### NOTE:

Selection of foam chamber is based upon foam solution pressure at inlet to foam chamber. If this pressure is marginal, always use the ext largest foam chamber size.

## Ordering Information

When ordering please supply the following:

1. Minimum inlet pressure at base of foam chamber and foam solution flow rate required (It is recommended a minimum of 30 PSI inlet pressure be available)
2. Type of deflector required - solid or split
3. Mounting pad if required

Part Number	Description	Approx. Ship Wt. Lbs. (Kg.)	Flow Range, GPM
EF12202	2-1/2" Foam Chamber, Carbon Steel	60 (27.2)	26 - 187
EF12206	2-1/2" Foam Chamber, Stainless Steel	60 (27.2)	26 - 187
FC2.51	2-1/2" Solid Deflector, Carbon Steel	5 (2.3)	N/A
EF12238	2-1/2" Solid Deflector, Stainless Steel	5 (2.3)	N/A
FC2.52	2-1/2" Split Deflector, Carbon Steel	5 (2.3)	N/A
EF12239	2-1/2" Split Deflector, Stainless Steel	5 (2.3)	N/A
FC2.53	2-1/2" Mounting Pad, Carbon Steel	15 (6.8)	N/A
EF12246	2-1/2" Mounting Pad, Stainless Steel	15 (6.8)	N/A
FC2.54	2-1/2" Vapor Seal Assembly	1 (0.5)	N/A
EF12203	3" Foam Chamber, Carbon Steel	100 (45.4)	82 - 309
EF12207	3" Foam Chamber, Stainless Steel	100 (45.4)	82 - 309
FC3.01	3" Solid Deflector, Carbon Steel	10 (4.5)	N/A
EF12240	3" Solid Deflector, Stainless Steel	10 (4.5)	N/A
FC3.02	3" Split Deflector, Carbon Steel	10 (4.5)	N/A
EF12241	3" Split Deflector, Stainless Steel	10 (4.5)	N/A
FC3.03	3" Mounting Pad, Carbon Steel	20 (9.1)	N/A
EF12247	3" Mounting Pad, Stainless Steel	20 (9.1)	N/A
FC3.04	3" Vapor Seal Assembly	1 (0.5)	N/A
EF12204	4" Foam Chamber, Carbon Steel	145 (65.8)	130 - 737
EF12208	4" Foam Chamber, Stainless Steel	145 (65.8)	130 - 737
FC4.01	4" Solid Deflector, Carbon Steel	20 (9.1)	N/A
EF12242	4" Solid Deflector, Stainless Steel	20 (9.1)	N/A
FC4.02	4" Split Deflector, Carbon Steel	20 (9.1)	N/A
EF12243	4" Split Deflector, Stainless Steel	20 (9.1)	N/A
FC4.03	4" Mounting Pad, Carbon Steel	35 (15.9)	N/A
EF12248	4" Mounting Pad, Stainless Steel	35 (15.9)	N/A
FC4.04	4" Vapor Seal Assembly	1 (0.5)	N/A
EF12205	6" Foam Chamber, Carbon Steel	270 (122.5)	329 - 1120
EF12209	6" Foam Chamber, Stainless Steel	270 (122.5)	329 - 1120
FC6.01	6" Solid Deflector, Carbon Steel	30 (13.6)	N/A
EF12244	6" Solid Deflector, Stainless Steel	30 (13.6)	N/A
FC6.02	6" Split Deflector, Carbon Steel	30 (13.6)	N/A
EF12245	6" Split Deflector, Stainless Steel	30 (13.6)	N/A
FC6.03	6" Mounting Pad, Carbon Steel	50 (22.7)	N/A
EF12249	6" Mounting Pad, Stainless Steel	50 (22.7)	N/A
FC6.04	6" Vapor Seal Assembly	2 (0.9)	N/A

### EACH FOAM CHAMBER COMES COMPLETE WITH THE FOLLOWING:

- (1) Vapor seal
- (1) Orifice - sized per customer requirements
- (2) Vapor seal gaskets
- (1) Inspection cover gasket
- (2) Inlet gaskets
- (2) Outlet gaskets
- Various nuts, bolts, etc. to make complete assembly.
- Deflectors, mounting pads and spare vapor seal assemblies sold separately.
- Vapor Seal Assemblies can be used with carbon steel or stainless steel units.